



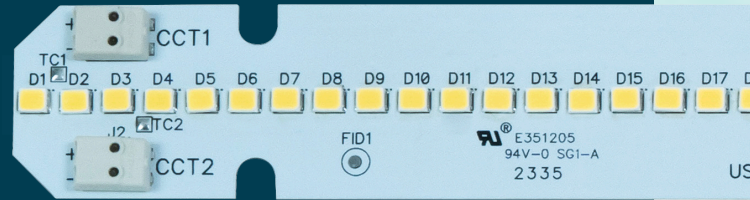
Electrical Specifications

Driver type:	Constant Current
Drive Current:	400 mA Typ. / 1600 mA Max.
Total Board Power:	7.8 W Typ. / 35.4 W Max.
Life:	50,000 Hrs. @ 85 °C
Max Junction Temp:	125 °C
Max Test Point Temp:	120 °C
Operating Temp:	-40 °C to +105 °C
Storage Temp:	-40 °C to +100 °C
Viewing Angle (FWHM):	120° Lambertian distribution

* The "M" is a reference letter that indicates that the module can be built with either Cree or Samsung LEDs.

LE112C30508*M-22

22" LINEAR 2-CHANNEL / TUNABLE LED MODULES



Manufactured in the USA as a component for BABA & Buy American compliant LED Luminaires.



LE112C30508*M-22 • Nominal Forward Voltage: 18.6 V Nom. / 19.8 V Max.

Model	Color Temp (K)	Forward Voltage (V)	Drive Current (mA)	Power (W)	Lumens	Efficacy (Lm/W)
LE112C-30508*M-22	3000	18.63	400	7.45	1390.4	186.6
		19.05	800	15.24	2698	177.0
		19.43	1200	23.3	3949	169.5
		19.78	1600	31.6	5144	162.8
LE32C-50508*M-22	5000	18.63	400	7.45	1435	192.6
		19.05	800	15.24	2762	181.2
		19.43	1200	23.3	3982	170.9
		19.78	1600	31.6	5044	159.6

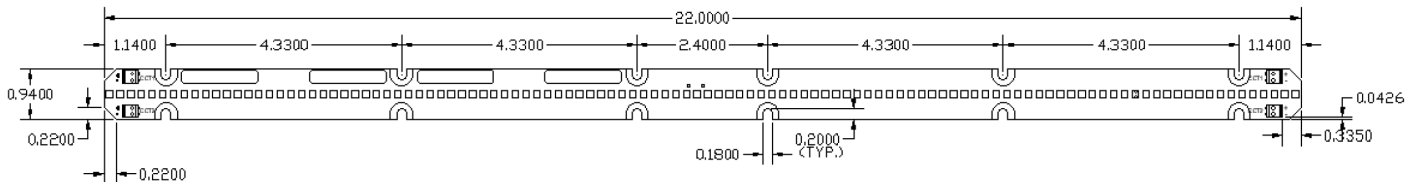
Overview:

- Constant Current DC Array
- 7 LEDs in series x 16 parallel strings
- Designed for easy use in standard luminaires
- 3-step MacAdam Ellipse
- UL Recognized Components

Connectivity:

For Poke-In Connectors use #24-18 AWG stranded or BJB Connector, Part # 46.142.1001.50

Dimensions:



- FR4 PCB material
- 0.8 mm board thickness

Disclaimer: The modules referenced in this document are designed for use with either Cree or Samsung LEDs, unless explicitly specified otherwise, as is the case with Turtle-friendly modules. The inclusion of the letter "M" in the model number signifies that the standard configuration assumes the utilization of Cree or Samsung LEDs.

3401 Avenue D, Arlington, TX 76011 • 800-375-6355 • www.aceleds.com

Data is based upon tests performed by AC Electronics in a controlled environment and representative performance. Actual performance can vary depending on operating conditions. Specifications are subject to change without notice. All specifications are nominal unless otherwise noted.

