



Electrical Specifications

| | |
|------------------------------|------------------------------|
| Driver Type: | Constant Current |
| Drive Current: | 1440 mA Typ. / 2640 mA Max. |
| Total Board Power: | 48.2 W Typ. / 91.5 W Max |
| Life: | 50,000 Hrs. @ 85 °C |
| Max Junction Temp: | 85 °C |
| Max Test Point Temp: | 120 °C |
| Operating Temp: | -40 °C to +105 °C |
| Storage Temp: | -40 °C to +100 °C |
| Viewing Angle (FWHM): | 120° Lambertian distribution |

* The "M" is a reference letter that indicates that the module can be built with either Cree or Samsung LEDs.

LE192C-XX80*M-48 48" LINEAR



Manufactured in the USA as a component for BABA & Buy American compliant LED Luminaires.



LE192C-XX80*M-48 • Nominal Forward Voltage: 33.5 V Nom. / 34.7 V Max.

| Model | Color Temp (K) | Forward Voltage (V) | Drive Current (mA) | Power (W) | Lumens | Efficacy (Lm/W) |
|------------------|----------------|---------------------|--------------------|-----------|--------|-----------------|
| LE192C-4080*M-22 | 4000 | 33.5 | 1,440 | 48.2 | 8,108 | 168 |

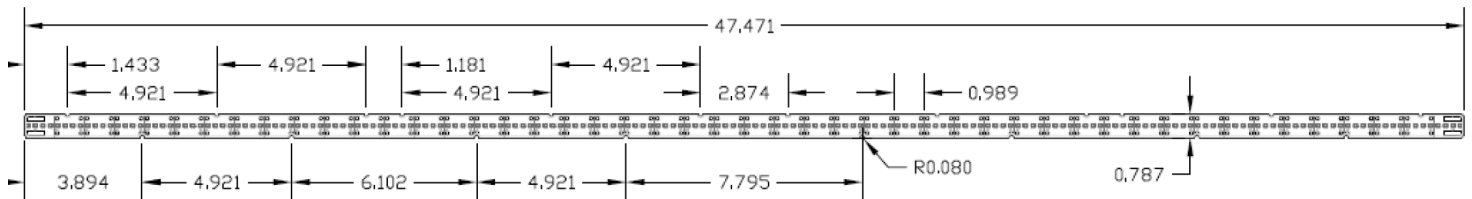
Overview:

- Constant Current DC Array
- 4 LEDs in series x 48 parallel strings (Breakable per 1")
- Designed for easy use in standard luminaires
- 3-step MacAdam Ellipse
- UL Recognized Components

Connectivity:

For Poke-In Connectors use #24-18 AWG stranded or BJB Connector, Part # 46.141.1001.50

Dimensions:



- MCPCB board material
- 1.6 mm board thickness

Disclaimer: The modules referenced in this document are designed for use with either Cree or Samsung LEDs, unless explicitly specified otherwise, as is the case with Turtle-friendly modules. The inclusion of the letter "M" in the model number signifies that the standard configuration assumes the utilization of Cree or Samsung LEDs.

3401 Avenue D, Arlington, TX 76011 • 800-375-6355 • www.aceleds.com

Data is based upon tests performed by AC Electronics in a controlled environment and representative performance. Actual performance can vary depending on operating conditions. Specifications are subject to change without notice. All specifications are nominal unless otherwise noted.