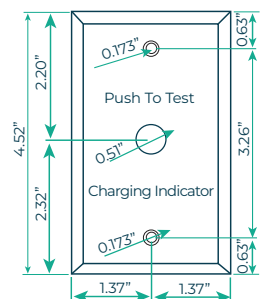


**Right angle test switch with conduit.**  
Model #: 10220600-04RA



**Chrome test switch, 12mm.**  
Model #: 10220176-05



Wall Plate dimensions  
in inches

## WALL PLATE ACCESSORY

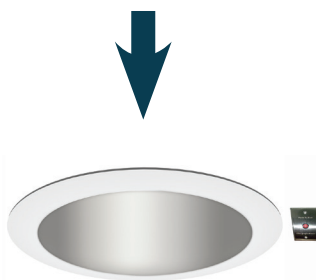


Model #:  
AEMC2WPL1  
**Plastic**



Model #:  
AEMC2WMT2  
**Metal**

## APPLICATION



## WHITE TEST SWITCH

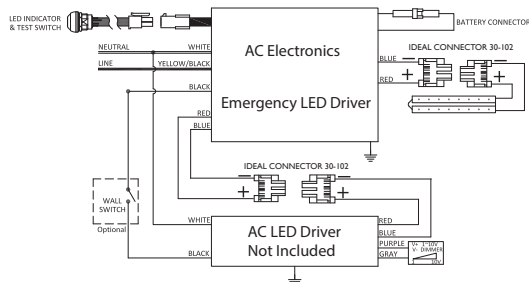
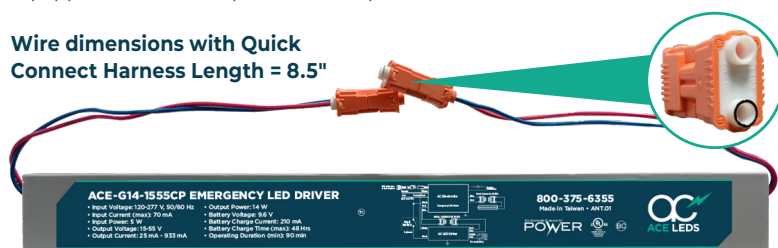


Model #:  
AEMITSWW1

## Quick connect harness Models:

Equipped with IDEAL quick connect push-in wire connectors.

## Wire dimensions with Quick Connect Harness Length = 8.5"



The IDEAL quick connect push-in wire connectors are the industry standard for luminaire connectors providing high quality quick connections, saving time, increasing productivity, and reduces errors.

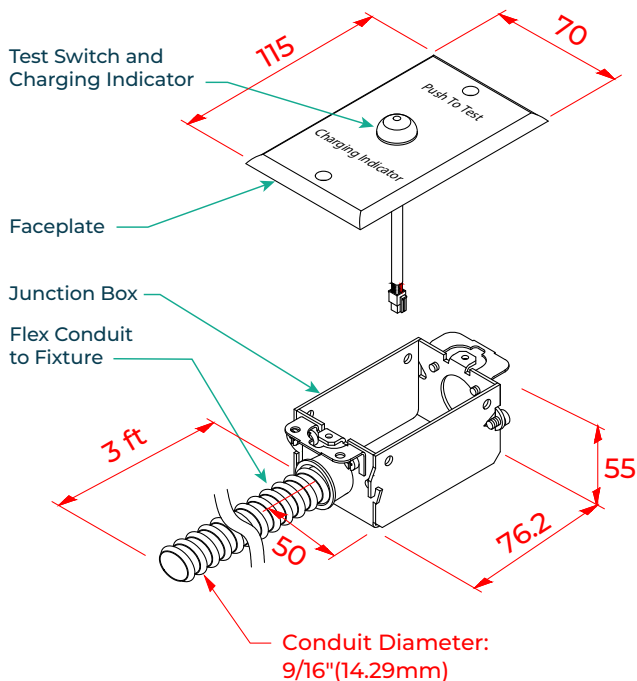
Model Number	Description & Order Information
<b>Q = Quick Connect</b>	You can order this option by just asking for the model number and adding (Q)
<b>Example</b>	ACE-G14-1555CPQ

Wire	Wire Gauge
<b>Solid</b>	12 - 18 AWG
<b>Standard</b>	12 - 14 AWG (≤19 STRAND)
<b>Tin Bonded</b>	12 AWG (≤19 STRAND) 14 AWG (≤19 STRAND) 16 AWG (≤26 STRAND) 18 AWG (≤16 STRAND)

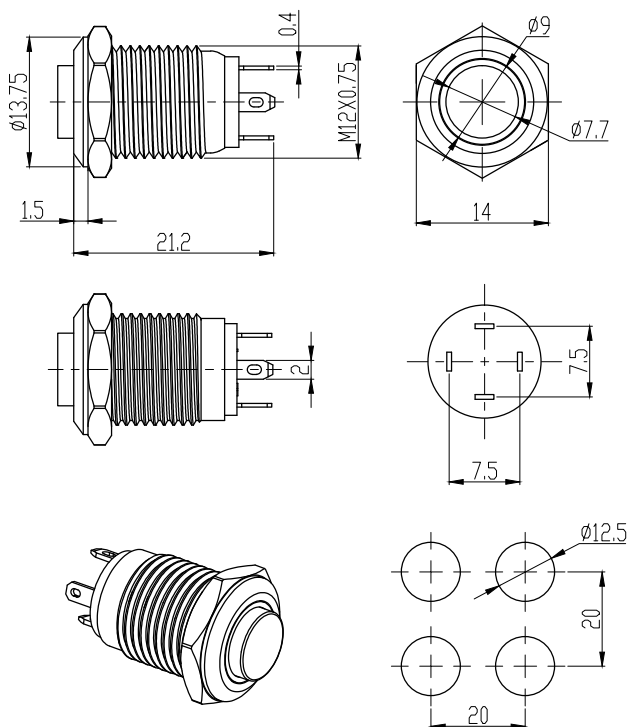
## Model # RTS1

This remote test switch (RTS1) allows for remote mounting of the test switch and indicator light.

**Includes:** Junction box, cover plate and flexible conduit wire (length: 3 ft.)



## Chrome Test Switch



### Technical Details

Rated Isolated Voltage	250 VAC/DC
Ambient Temperature	-25 to 55°C
Insulation Resistance	> 100 megohms
IP Rating	67
Protection Level	>10g
Mechanical life	300,000 Times
Appliance life	100,000 Times

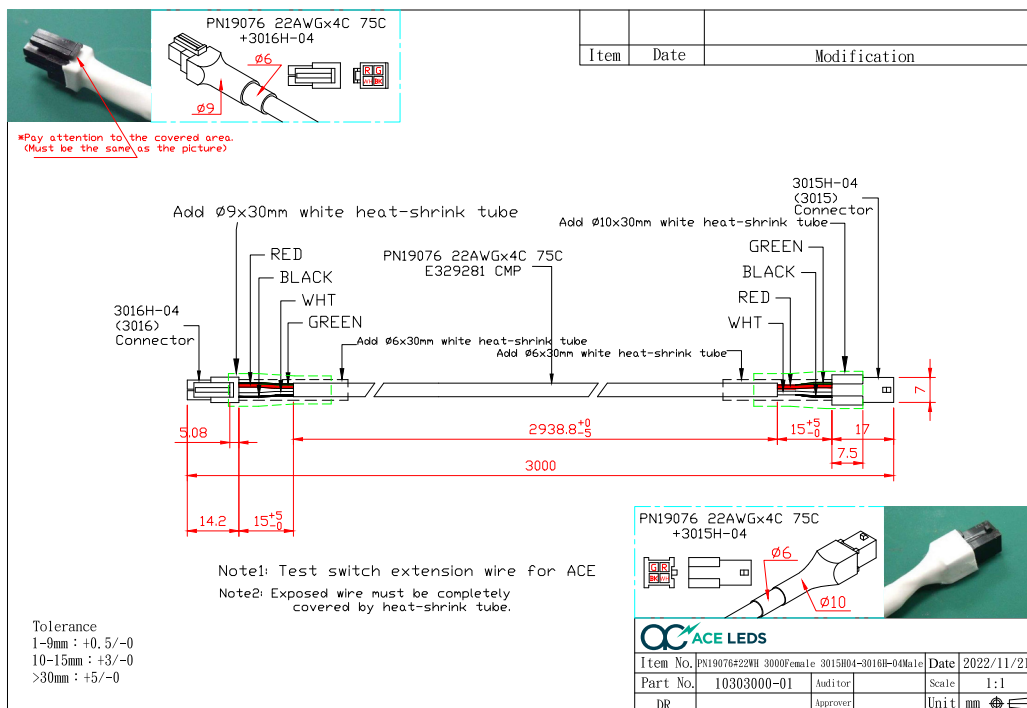
### LED Technical Details

Chip Type	LED Lamp (AC/DC)
Voltage Specification	AC/DC3V
LED Color	R
Rated Life Hours	40000

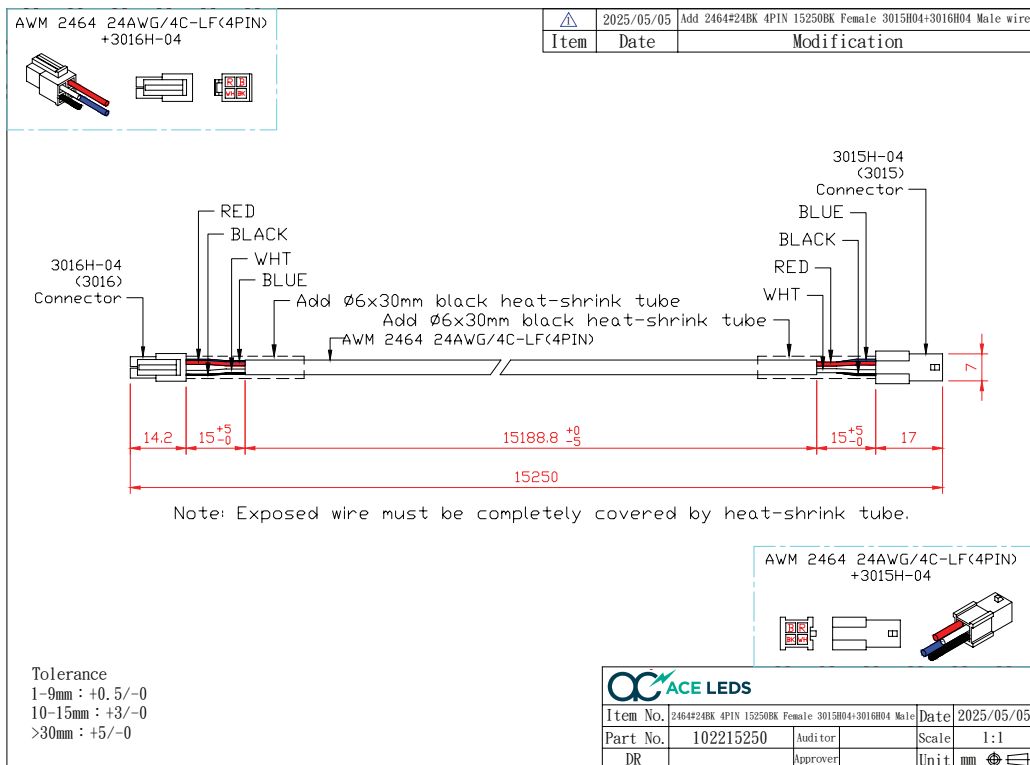
### Materials

Housing	Stainless steel & Copper chrome plated
Nut	Copper nickel plated
Base	PC
Pin	Gold plated copper
Pin Contact	Silver tin oxide

## 10 FT Test Switch Extender Cable



## 50 FT Test Switch Extender Cable



## 100 FT Test Switch Extender Cable

