

Right angle test switch with conduit.
Model #: 10220600-04RA



Chrome test switch, 12mm.
Model #: 10220176-05

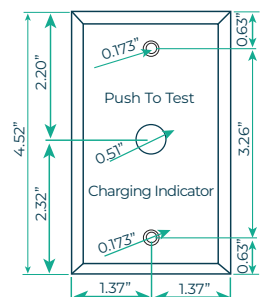


**WHITE
TEST SWITCH**



Model #:
AEMITSWW1

WALL PLATE ACCESSORY



Wall Plate dimensions
in inches

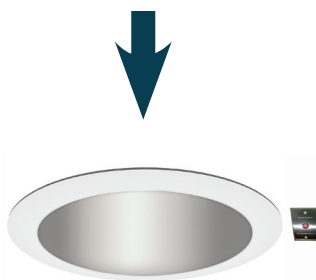


Model #:
AEMC2WPL1
Plastic



Model #:
AEMC2WMT2
Metal

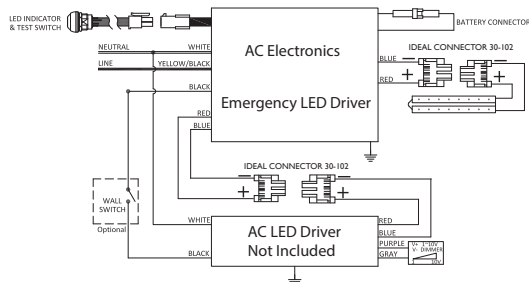
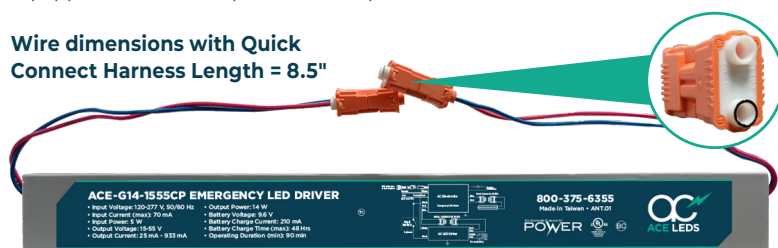
APPLICATION



Quick connect harness Models:

Equipped with IDEAL quick connect push-in wire connectors.

Wire dimensions with Quick Connect Harness Length = 8.5"



The IDEAL quick connect push-in wire connectors are the industry standard for luminaire connectors providing high quality quick connections, saving time, increasing productivity, and reduces errors.

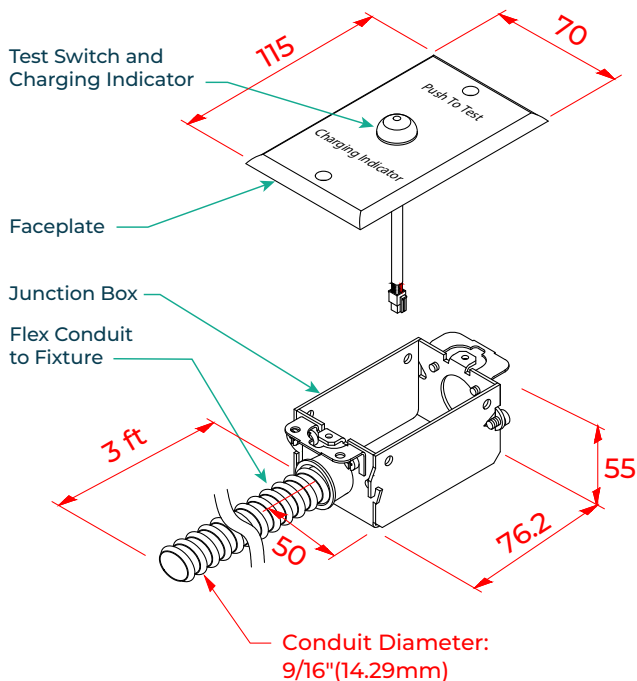
Model Number	Description & Order Information
Q = Quick Connect	You can order this option by just asking for the model number and adding (Q)
Example	ACE-G14-1555CPQ

Wire	Wire Gauge
Solid	12 - 18 AWG
Standard	12 - 14 AWG (≤19 STRAND)
Tin Bonded	12 AWG (≤19 STRAND) 14 AWG (≤19 STRAND) 16 AWG (≤26 STRAND) 18 AWG (≤16 STRAND)

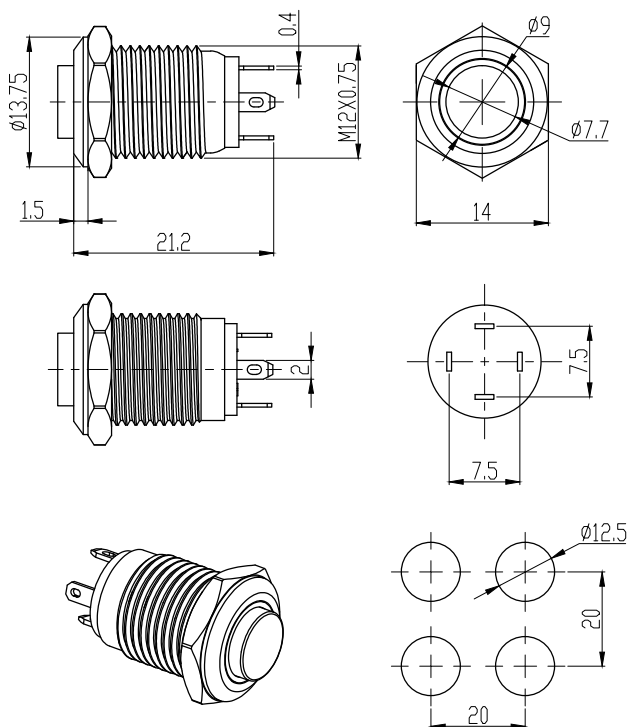
Model # RTS1

This remote test switch (RTS1) allows for remote mounting of the test switch and indicator light.

Includes: Junction box, cover plate and flexible conduit wire (length: 3 ft.)



Chrome Test Switch



Technical Details

Rated Isolated Voltage	250 VAC/DC
Ambient Temperature	-25 to 55°C
Insulation Resistance	> 100 megohms
IP Rating	67
Protection Level	>10g
Mechanical life	300,000 Times
Appliance life	100,000 Times

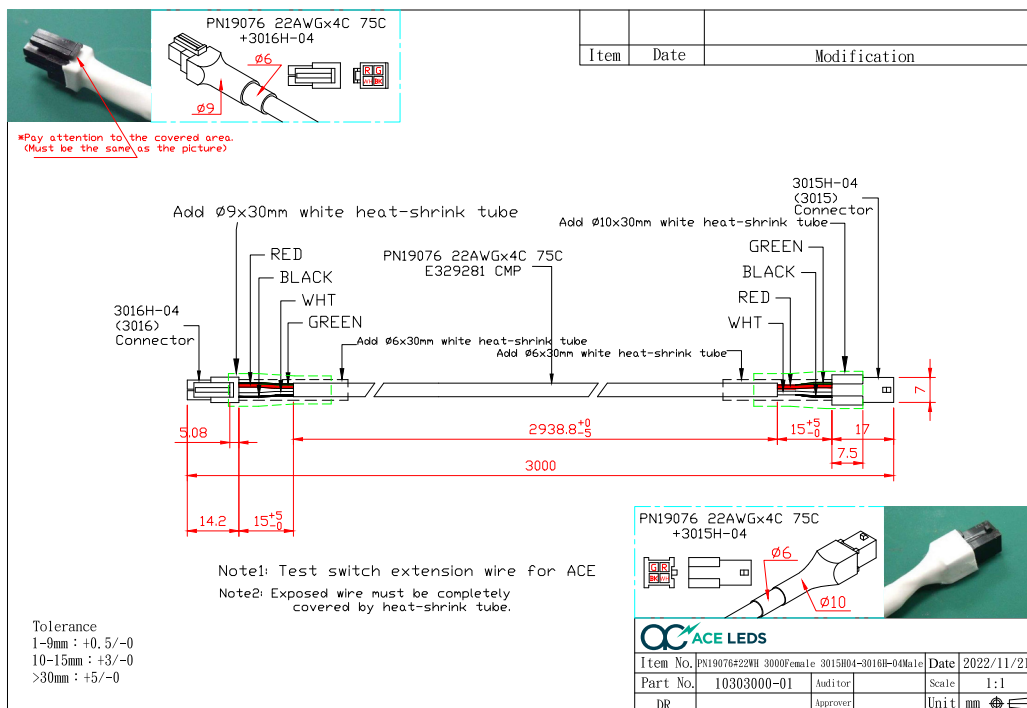
LED Technical Details

Chip Type	LED Lamp (AC/DC)
Voltage Specification	AC/DC3V
LED Color	R
Rated Life Hours	40000

Materials

Housing	Stainless steel & Copper chrome plated
Nut	Copper nickel plated
Base	PC
Pin	Gold plated copper
Pin Contact	Silver tin oxide

10 FT Test Switch Extender Cable



50 FT Test Switch Extender Cable

