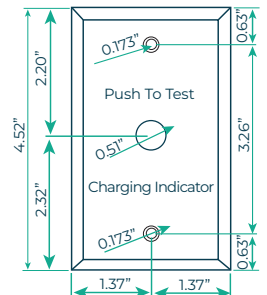


Right angle test switch with conduit.
Model #: 10220600-04RA



Chrome test switch, 12mm.
Model #: 10220176-05



Wall Plate dimensions in inches

WALL PLATE ACCESSORY

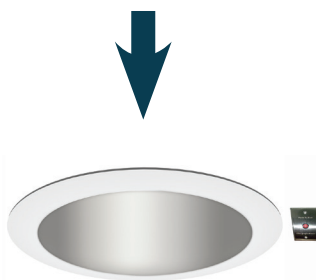


Model #: AEMC2WPL1
Plastic



Model #: AEMC2WMT2
Metal

APPLICATION



WHITE TEST SWITCH

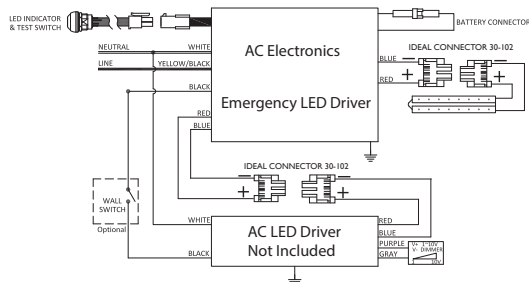
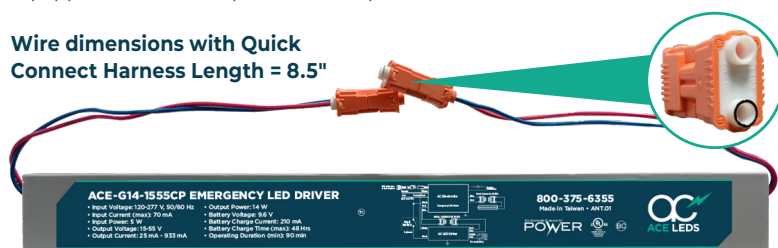


Model #: 10220663

Quick connect harness Models:

Equipped with IDEAL quick connect push-in wire connectors.

Wire dimensions with Quick Connect Harness Length = 8.5"



The IDEAL quick connect push-in wire connectors are the industry standard for luminaire connectors providing high quality quick connections, saving time, increasing productivity, and reduces errors.

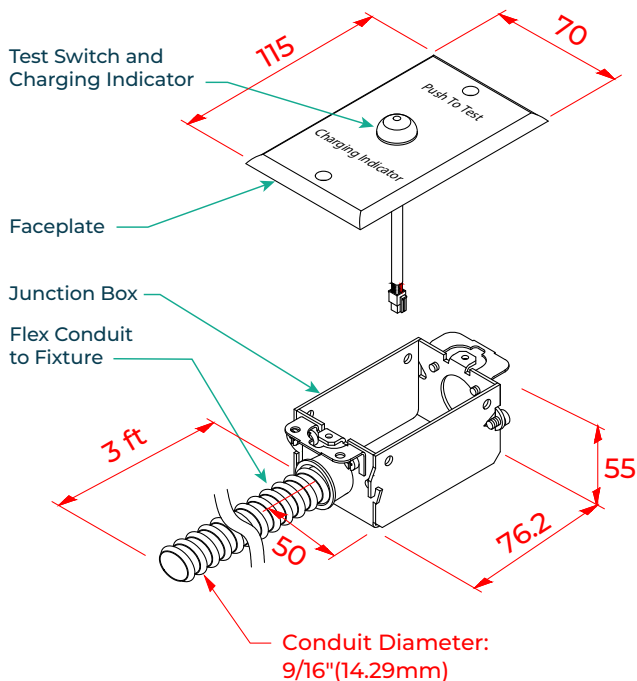
Model Number	Description & Order Information
Q = Quick Connect	You can order this option by just asking for the model number and adding (Q)
Example	ACE-G14-1555CPQ

Wire	Wire Gauge
Solid	12 - 18 AWG
Standard	12 - 14 AWG (≤19 STRAND)
Tin Bonded	12 AWG (≤19 STRAND) 14 AWG (≤19 STRAND) 16 AWG (≤26 STRAND) 18 AWG (≤16 STRAND)

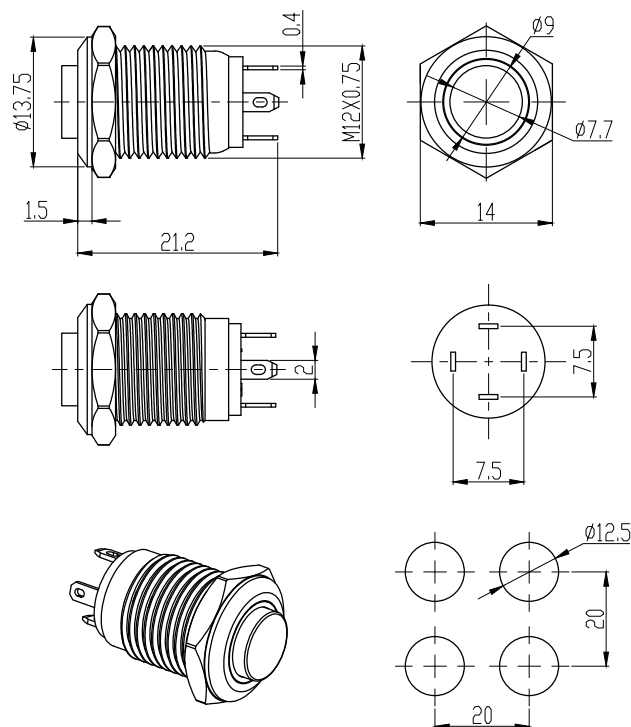
Model # RTS1

This remote test switch (RTS1) allows for remote mounting of the test switch and indicator light.

Includes: Junction box, cover plate and flexible conduit wire (length: 3 ft.)



Chrome Test Switch



Technical Details

Rated Isolated Voltage	250 VAC/DC
Ambient Temperature	-25 to 55°C
Insulation Resistance	> 100 megohms
IP Rating	67
Protection Level	>10g
Mechanical life	300,000 Times
Appliance life	100,000 Times

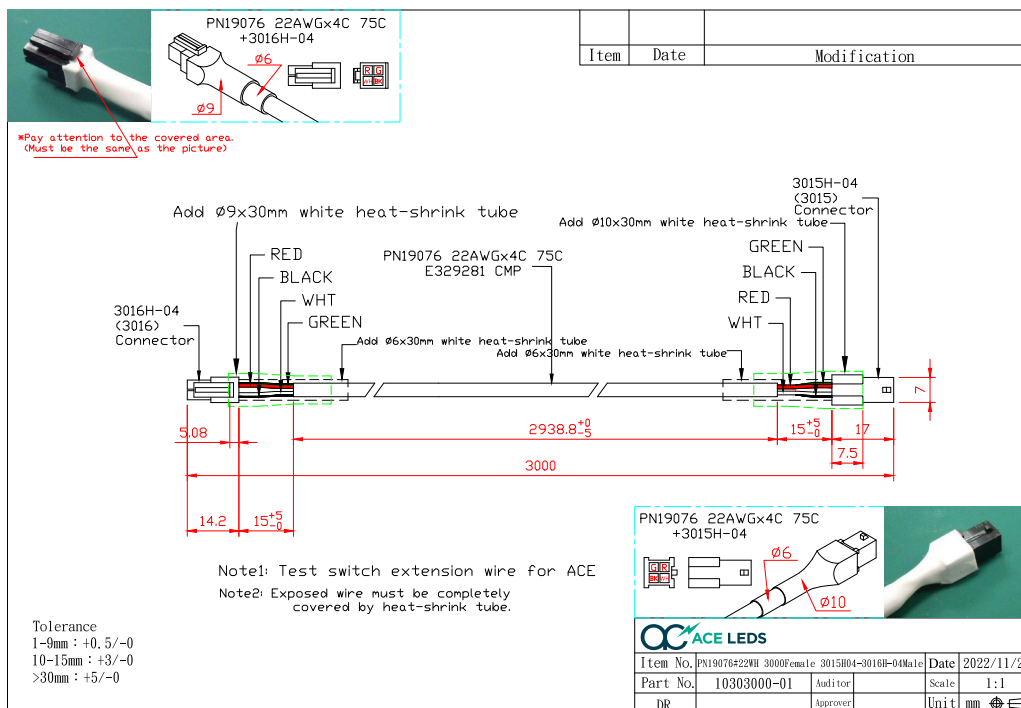
LED Technical Details

Chip Type	LED Lamp (AC/DC)
Voltage Specification	AC/DC3V
LED Color	R
Rated Life Hours	40000

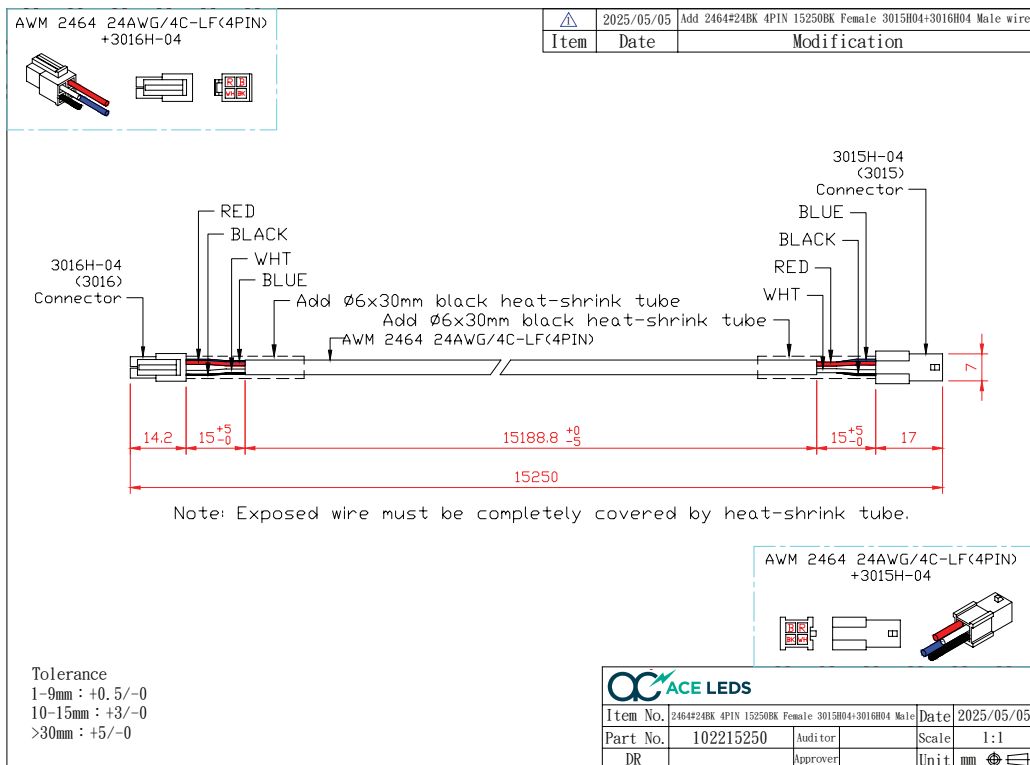
Materials

Housing	Stainless steel & Copper chrome plated
Nut	Copper nickel plated
Base	PC
Pin	Gold plated copper
Pin Contact	Silver tin oxide

10 FT Test Switch Extender Cable



50 FT Test Switch Extender Cable



100 FT Test Switch Extender Cable

